



AAUW

# Sound Waves

Oct/Nov

2010

Issue 2 / Volume 11

## **THE ANNUAL BOOK AND AUTHOR LUNCHEON** November 6, 11:30AM, Clinton Country Club—Rte 145

This is the pre-eminent fundraiser of the year, a time to enjoy a delightful program while supporting work of the Shoreline Branch. Please send your \$40 reservation check --payable to AAUW/Shoreline Branch-- to :

Jane Ann Miller  
337 Race Hill Road  
Madison, CT 06643

Enjoy chicken/mushroom crepes or vegetarian crepes while you chat with friends in a lovely dining room overlooking the grounds of the Clinton Country Club. Then turn your attention to three authors who will give us 'inside stories' on the adventures of their fictional characters.

### **MORE DETAILS ARE INSIDE THIS NEWSLETTER**

## FOLLOW-UP ON NATIONAL CONFERENCE FOR COLLEGE WOMEN STUDENT LEADERS

At the Potluck Event, September 22, members were treated to an engaging presentation by Michelle Opalenik and Alison Regan whose attendance we sponsored at the NCCWSL event held last June. In their shared talk, they described the things they learned from two intense days of classes and workshops on management philosophies and interviewing strategies. Their enthusiasm was reinforced in a note to our membership which said, "Thank you so much for allowing the both of us the wonderful opportunity to attend the NCCWSL/AAUW conference in Maryland. We will be forever grateful for your tremendous support and nominations!"

Given the success of this first foray into underwriting attendees at NCCWSL, the Shoreline Board voted (October 7) in favor of continuing sponsorships.

WHEN YOU ATTEND MEETINGS THIS HOLIDAY SEASON, PLEASE BRING NON-PERISHABLE FOODS OR MONETARY DONATIONS FOR THE 'SHORELINE SOUP KITCHEN AND PANTRY'. YOU'LL BE GIVING GIFTS OF LIFE AND RECEIVING GIFTS OF SPIRIT

## **PRESIDENT'S MESSAGE**

It is election season and computerized calls are filling my voicemail, fliers are flooding the mailbox, and negative political ads are dominating the airwaves. The blitz seems overwhelming, but I am resolved to make the best decisions I can while completing that mid-term election ballot. Each time I vote, I think of the struggles of the suffragettes who won the right to vote in a Federal election 90 years ago. I am reminded that I am the first woman in my immediate family who was born with that right.

AAUW was begun in the times and through the efforts of the early suffragettes. Educated women seeking equality and opportunity started AAUW 128 years ago. Each woman's vote advances the historic cause of the suffragettes and the present work of AAUW. Please join me on Tuesday, November 2<sup>nd</sup>.

*Alice Reitz*

## **BOARD MEETINGS** (Open to all members)

November 4 – 6:30PM

January 8 – 10AM

February 5 – 10AM

March 3 – 6:30PM

--All meetings will be held at Henry Carter Hull Library, 10 Killingworth Tpke., Clinton. For additional information: call Alice Reitz (203) 245-9208

## **BOARD-COMMITTEE MEMBERS**

Pres: Alice Reitz  
Membership: Joan Filbey, Carolyn Johns  
Program: Shelley Pelletier, Ann Gordon  
Treas: Melissa Lamoreaux, Janet Holmes  
Public Policy: Jeanette Olchowski  
Sec: Elizabeth Goss, Nancy Day  
Advertising: Marsha Brunelle  
B&A Lunch: Marcia Myhre, Carolyn Dugan  
Book Awards: Denise Bryan, Virginia Triola  
Corresponding Sec: Kay Conover  
Directory: Cathy Briggs  
E.F/L.A.: Marilyn Kennedy, Barbara Dunham  
E-mail Communicator: Gene St. Paul  
Historian: Gwen Waldo  
Hospitality: Sonja Gibbs, Jane West  
Newsletter: Jan Jones  
Parliamentarian: Carol Geiser  
Public Policy: Jeanette Olchowski  
Publicity: Helen Green, Elaine Quayle  
Rides Coordinator: Nancy Chalker  
Scholarship: Andrea Osburne, Marcia Myhre  
Web Site: Marie Morch  
(Nominating Committee: Kay Conover, Gene St. Paul)

## **INTEREST GROUP CONTACTS**

Art: Mary Ann McAvoy 203-421-3451  
Bridge I: Eloise Brady 203-245-8114  
Bridge II: Carolyn Johns 203-453-3325  
Finance: Shelley Pelletier 203-245-4822  
Gourmet: Ann Ward 203-245-2527 and  
Melissa Lamoreaux 203-458-0857  
Great Adventures: Nancy Chalker 203-245-4485 and Helena Heath 860-399-0136  
Hiking: Bobbie Shildneck 203-245-3130  
International I: Gene St. Paul 203-453-3054  
International II: Mary Lee Duff 203-453-0014  
Literature I: Joyce Hirschhorn 860-663-1070  
Literature II: Jane Ann Miller 203-421-3061  
Literature III: Marilyn Kennedy 203-421-8490

## OUR SCHOLARSHIP\* AWARD WENT TO----MARTINA

Martina Parashkevova, born and raised in Bulgaria, says in library tones, “Life is a challenge”. Judge for yourself:

—she carries a full class load with a double major (Sociology and Anthropology) at the ,  
University of Connecticut

---she holds two salaried jobs (one in Banquet Services at Waters Edge in Westbrook;  
the other in the Admissions Office at UConn)

---she is engaged in two volunteer jobs (one for UNESCO; the other conducting tours at  
UConn’s Avery Point Campus).

---and, to add a couple more hours to the day, she commutes from Westbrook, where  
she lives with her husband, to the Hartford area where she attends classes

Martina’s next step is graduate work. With one semester to go at UConn she has her  
eye on earning a Masters at SIT International Institute, Brattleboro, Vermont---originally  
the training facility for Peace Corps volunteers. She expects SIT’s focus on global  
issues and her focus on human rights issues will help her define a career path which will  
point her in a multi-cultural direction where her talents are unmistakable and  
challenges never end.

Additional note: Martina’s mother, now living in Spain, is her role model. Under  
“challenging” circumstances, mom worked and raised two children, Martina and an  
older brother who is earning a Masters in International Studies in Denmark.  
Someday—soon, hopefully---mother and daughter will reunite, son-in-law and mother-  
in-law will meet for the first time and together they will see some of the U.S.A..Until  
then, they talk daily on Skype.

\*Each year the Shoreline Branch awards a \$2000 scholarship to a student who has earned at least 60  
college credits and has a GPA of 3.0 or higher. The award is based on financial need, academic  
performance and personal qualifications. Eligible candidates must reside in one of the shoreline towns  
(Branford, North Branford, Guilford, Madison Killingworth, Clinton or Westbrook) and cannot be related to  
an AAUW Shoreline member.

## WE’RE GOING VISIT ELI WHITNEY October 23, Grove Street Cemetery, New Haven

Eli’s is one of the famous ‘residents’ at Grove Street Cemetery. The Great Adventures  
Group, made this inspired choice for a Halloween outing. Call Gene St. Paul (203-453-  
3054) to let her know you would like to join the group visiting the first chartered burial  
ground in the United States. A tour guide will acquaint attendees with facts and fictions  
about this National Historic Landmark where famous and not so famous people were  
interred between 1797 and 1812. Lunch will follow at the Lawn Club in New Haven,  
thanks to Jane Ann Miller.

Plan to meet at 10AM at the parking area on Rte 77, off I-95. (There will be limited  
parking at the Cemetery so car pooling is advisable.)

## REMINDER! WOMEN IN THE MILITARY

October 20, 7PM, Nathaniel Greene Community Center, Guilford

Lieutenant Kristen Kramer, Equal Opportunity Advisor for the Coast Guard Civil Rights Directorate in New York, New Jersey and Connecticut, will be the speaker at our October Branch Program hosted by the Bridge Group. For some audience members,



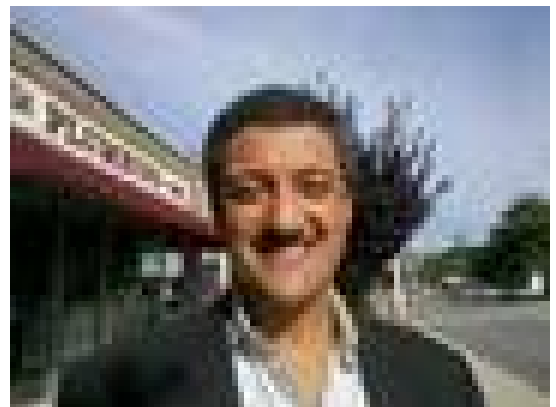
this may be a first look at the types of careers followed by women in the military. For other audience members, it may be an opportunity to ask questions about Homeland Security which oversees the Coast Guard. For everyone, it will be a good opportunity to gain insights on this military and law enforcement service.

~~~~~

## HOLIDAY DIAMONDS

December 8, 10AM, Clinton Library

Great Adventures is hosting a glittering Holiday Branch Meeting where diamonds (still a girl's best friend) will be the topic. Tony Suarez, owner of Northern Light Gems in Mystic and Niantic will tell us all we ever wanted to know about this gem, a symbol of love and source of chicanery throughout recorded time. Whether you plan to give, hope to receive or are just looking, enjoy the sparkle.





Connecticut Shoreline Branch  
 American Association of University Women  
**Book/Author Luncheon**

**Saturday, November 6, 2010, 11:30 am**  
**Clinton Country Club (Route 145, South of I-95 Exit 64)**

Book signing/purchase of books before and after luncheon—bring some friends!  
 All proceeds benefit the AAUW Educational Foundation and our local scholarship. Donations also accepted.

*Featuring our authors*



**Diane Meier**  
*The Season of Second Chances*



**Nancy Goldstone**  
*The Lady Queen: The Notorious Reign of Joann I, Queen of Naples, Jerusalem, and Sicily*



**Leslie Connor**  
*Waiting for Normal, CRUNCH*

Tickets \$40 per person (gratuity included)

**Menu**

Crudités and cheeses; choice of chicken/mushroom or vegetarian crêpes;  
 mesclun/cranberry salad; Linzer hearts, lemon squares, brownies, cookies; coffee & tea

**Patrons/Program Ads**

\$25-Bronze; \$50-Sterling; \$100-Platinum; Business card ad-\$35  
 Make patron checks payable to AAUW Education Foundation  
 Mail to Marsha Brunelle, 68 Flintlock Rd., Madison, CT 06443

Book/Author Luncheon Reservations-Due **October 30, 2010**  
 Send checks to Jane Ann Miller, 337 Race Hill Road, Madison, CT 0644

Luncheon checks payable to AAUW/Shoreline Branch

Name: \_\_\_\_\_ Phone: \_\_\_\_\_

Mailing address: \_\_\_\_\_

Guests: \_\_\_\_\_

#Chicken/mushroom crepes \_\_\_\_\_ #Vegetarian crepes: \_\_\_\_\_

*Note:* Tables seat 8—indicate those with whom you wish to be seated other than guests above:

Call 203-421-3061, 203-421-3053, or 203-453-5116 for more information

## AN HISTORIC NOTE

Gwen Waldo, our historian, tells us that at its outset, in 1950, this chapter was known as the AAUW Guilford-Madison Branch. During the decades that followed, the growing organization added members from every town between Guilford and Old Lyme. Thus, at a Board Meeting in April 1987, Vicki Littell suggested the name be changed to AAUW Shoreline Branch. Wasn't that a good idea? .....If you want to learn more, go to The Dodd Research and Archives Center at the University of Connecticut where AAUW's Connecticut branch files are housed and available for some interesting reading.

### **BRANCH MEETING CALENDAR**

**Annual Book and Author Luncheon** – November 6, 11:30AM – Clinton Country Club—Three authors will speak at this luncheon, the largest fund raising event of the year. Reservations required by October 30 – tickets \$40, payable to AAUW Shoreline Branch – mail to Jane Ann Miller, 337 Race Hill Road, Madison, Ct. 06443

**Holiday Coffee – Diamonds** – December 8, 10AM –Clinton Library—Tony Suarez, owner of Northern Light Gems, will talk about diamonds, myth and reality. Contact Ann Gordon—860-434-8608 for further details.

### **INTEREST GROUP CALENDARS**

- International Group** (Mondays, 10AM) – contact Gene St. Paul, 203-453-3054  
November 1 “Transnational Crime: Globalization’s Shadowy Stepchild”  
December 6 “Immigration”  
January 2011 No meeting
- International Group** (Wednesdays, 7PM) – contact Mary Lee Duff, 203-453-0097  
October 27 “The U.S. and the Persian Gulf”  
November 26 “Enhancing Security Through Peacebuilding”
- Literature Group** (Mondays, 1PM) – contact Marilyn Kennedy, 203-421-8490  
November 15 “Let the Great World Spin” Colum McCann  
December No meeting  
January 17 “The Help” Kathryn Stockett
- Great Adventure** Nancy Chalker, 203-245-4485 or Helena Heath, 860-399-0136  
October 23 Grove Street Cemetery

*Note to Interest Groups: If you wish to publicize your schedules, please send information to Jan Jones, [jeanettejones2001@yahoo.com](mailto:jeanettejones2001@yahoo.com)*

#### **VISITING A DEVELOPING COUNTRY?**

“Kids-to-Kids International” is an organization that collects books written and illustrated by U.S. youngsters, packages them with school supplies and asks travelers to make goodwill deliveries to children in other countries. For more information contact Gene St. Paul, 203-453-3054 or [GeneSTP@sbcglobal.net](mailto:GeneSTP@sbcglobal.net).